



**REGIONAL SPECIALISED METEOROLOGICAL CENTRE-TROPICAL CYCLONES, NEW DELHI
TROPICAL WEATHER OUTLOOK**

DEMS-RSMC TROPICAL CYCLONES NEW DELHI DATED 16.12.2024

TROPICAL WEATHER OUTLOOK FOR THE NORTH INDIAN OCEAN (THE BAY OF BENGAL AND THE ARABIAN SEA) VALID FOR THE NEXT 168 HOURS ISSUED AT 0600 UTC OF 16.12.2024 BASED ON 0300 UTC OF 16.12.2024.

BAY OF BENGAL:

Under the influence of yesterday’s upper air cyclonic circulation over south Andaman Sea and adjoining south east Bay of Bengal, a low-pressure area is formed over central parts of south Bay of Bengal at 0300 UTC of today the 16th December, 2024 and associated cyclonic circulation extended up to 3.1 km above mean sea level. It is likely to become more marked and move west-northwestwards towards Tamil Nadu coast during subsequent two days.

A continuous watch is being maintained for further intensification and movement of the system.

Scattered low and medium clouds with embedded intense to very intense convection lay over south adjoining central Bay of Bengal and Andaman Sea (minimum CTT minus 70-80 deg cel). Scattered low and medium clouds with embedded moderate to intense convection lay over north Andaman Sea & Tenasserim coast.

***PROBABILITY OF CYCLOGENESIS (FORMATION OF DEPRESSION) DURING NEXT 168 HRS:**

24 HOURS	24-48 HOURS	48-72 HOURS	72-96 HOURS	96-120 HOURS	120-144 HOURS	144-168 HOURS
NIL	NIL	NIL	NIL	NIL	NIL	NIL

***NOTE: EVERY 24HR FORECAST IS VALID UPTO 0300 UTC (0830 IST) OF NEXT DAY**

ARABIAN SEA:

Yesterday’s upper air Circulation over Lakshadweep and adjoining south east Arabian Sea lay over southeast Arabian Sea and adjoining Lakshadweep area extended up to 3.1 km above mean sea level and persists at 0300 UTC of today, the 16th December, 2024.

Scattered low and medium clouds with embedded intense to very intense convection lay over south Arabian sea and Maldives (minimum CTT minus 70-80 deg cel). Scattered low and medium clouds with embedded isolated weak to moderate convection lay over Lakshadweep island Area, Maldives & Comorin Area.

***PROBABILITY OF CYCLOGENESIS (FORMATION OF DEPRESSION) DURING NEXT 168 HRS:**

24 HOURS	24-48 HOURS	48-72 HOURS	72-96 HOURS	96-120 HOURS	120-144 HOURS	144-168 HOURS
NIL	NIL	NIL	NIL	NIL	NIL	NIL

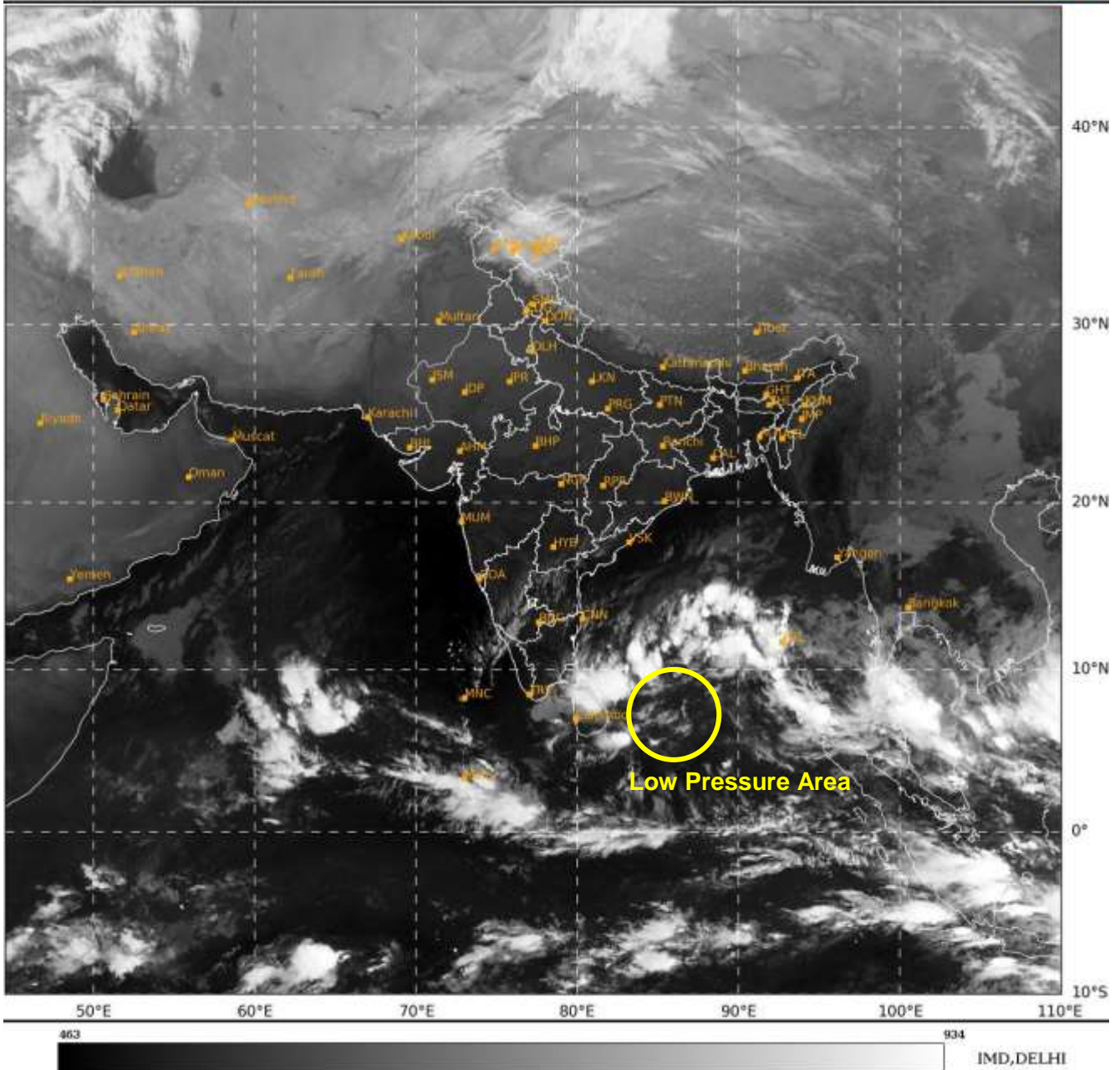
Cloud distribution: (a) Isolated: <25%, Scattered:25-50%, Broken: 51-75%, Solid:>75%, Convection Intensity: (a) Weak: Cloud Top Temperature (CTT) >-25°C, (b) Moderate: CTT: - 25°C to -40°C, (c) Intense: CTT: - 41°C to -70°C and (d) Very Intense: : Less than -70°C
PROBABILITY OF CYCLOGENESIS (FORMATION OF DEPRESSION):NIL: 0%, LOW: 1-33%, , MODERATE: 34-66% AND HIGH: 67-100%
This is a guidance Bulletin for WMO/ESCAP Panel Member countries. Visit respective National websites for Country specific Bulletins

*NOTE: EVERY 24HR FORECAST IS VALID UPTO 0300 UTC (0830 IST) OF NEXT DAY

REMARKS: NIL

SAT : INSAT-3DR IMG
IMG_TIR1 10.8 um
LIC Mercator

16-12-2024/(0315 to 0342) GMT
16-12-2024/(0845 to 0912) IST



Cloud distribution: (a) Isolated: <25%, Scattered:25-50%, Broken: 51-75%, Solid:>75%, Convection Intensity: (a) Weak: Cloud Top Temperature (CTT) >-25°C, (b) Moderate: CTT: - 25°C to -40°C, (c) Intense: CTT: - 41°C to -70°C and (d) Very Intense: : Less than -70°C
PROBABILITY OF CYCLOGENESIS (FORMATION OF DEPRESSION):NIL: 0%, LOW: 1-33%, , MODERATE: 34-66% AND HIGH: 67-100%
This is a guidance Bulletin for WMO/ESCAP Panel Member countries. Visit respective National websites for Country specific Bulletins